



**Off the Grid: San Anselmo at Red Hill Shopping Center**  
Use Permit Application – Estimated Sound Impact on Adjacent Property

This letter provides an overview of the sound amplification level at an Off the Grid market and estimates the sound level at the property line. Off the Grid events host music performed under a 10x10 tent located in the middle of the market. The sound is amplified by two STAGEPAS 400i speakers, which have a maximum decibel level of 125 dB. The speakers are positioned towards the center of the market.

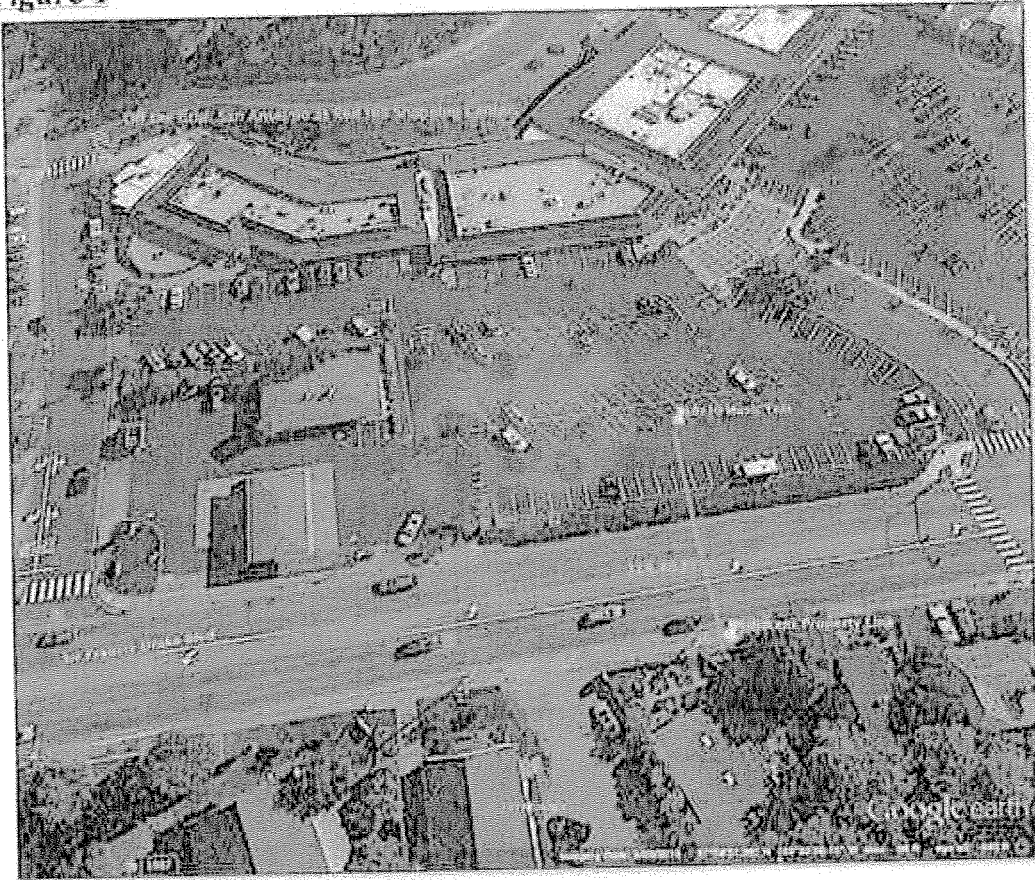
In order to provide information needed to help make a decision regarding the sound impact of Off the Grid's music, Figure 1 shows the distance from the music location within the market to the property line of 800 Sir Frances Drake Boulevard. Figure 1 shows that the distance from the music tent to the adjacent property line is 114.40 ft., or 34.87 Meters. The speakers will be amplified to a decibel level of between 62.5 and 125.

Sound Services, a professional commercial sound company, has provided a calculator that estimates the decibel level at the adjacent property line by calculating the sound attenuation due to distance. Figure 2 shows this calculation for both the maximum of 125 and minimum of 62.5 decibels. The sound impact at the property line will be between 32 and 94 decibels. This decibel range compares to the sound of a whisper in library and truck traffic according to Galen Carol Audio.

Sincerely,

Bin Himlan  
Director, Business Development  
Off the Grid Services, LLC

Figure 1



Distance from music tent to adjacent property line